



Marvin Hayes
Executive Director

Kenneth Moss
Lead Youth Composter

A youth-empowered food
scrap collection service,
Black-owned & led business,
building a diverse composting
community in Baltimore



Compost

Learn so we don't have to burn

Starve the incinerator

Feed the soil

Feed the community!

Clean air for Baltimore.





*According to
EPA reports:*

“
A waste to energy facility which converts up to 2,250 tons of municipal waste...as a local, sustainable fuel... to generate **CLEAN RENEWABLE** electricity.

The Wheelabrator Incinerator is the **SINGLE LARGEST** standing source of air pollution in Baltimore City. It stands as one of “a dirty dozen” incinerators in the country.”

*According to
Wheelabrator's website*



82%

of SULFUR DIOXIDE emissions in Baltimore come from the incinerator.

SULFUR DIOXIDE reduces lung function and causes incidents of respiratory symptoms & diseases.

293 lbs

of LEAD, released in the form of emissions, yearly from the incinerator.

LEAD can affect virtually EVERY organ system. Relatively low levels can affect nervous system development, especially in children & babies.



89%

of MERCURY emissions in Baltimore come from the incinerator.

MERCURY affects children and babies at rates higher than adults. Primarily affects neurological development.

52 lbs

of MERCURY, released in the form of emissions, yearly from the incinerator.

MERCURY can affect the nervous, immune, kidney, & digestive systems in addition to your lungs. Effects are irreversible.

Waste Processing Hotspots

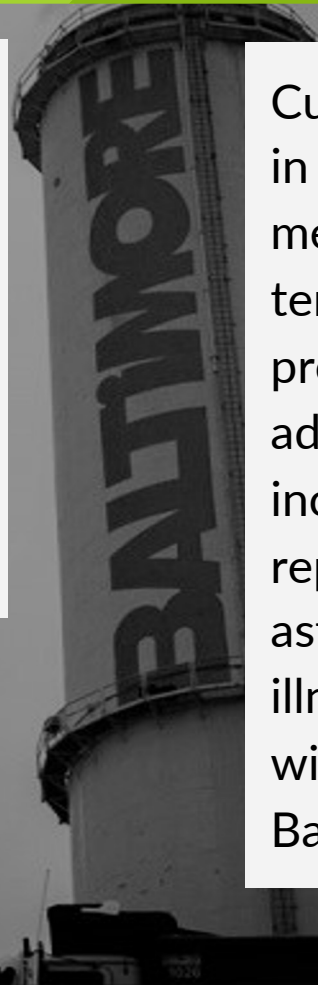
Once a facility is located in an area, it can create a precedent for concentrating other waste related facilities nearby.

Depressed Land Values + Increased Health Concerns

Depressed land values allow other waste related industries to move in due to lower land values. Residents suffer severe health impacts including, but not limited to, increased rates of asthma.

Environmental Justice Communities Bear Burden

Curtis Bay, a community in Baltimore, houses a medical incinerator, coal terminal, & chemical processing plant in addition to the incinerator. Residents report higher rates of asthma & respiratory illnesses when compared with other zip codes in Baltimore City.



ENVIRONMENTAL JUSTICE COMMUNITIES

Within a 3-mile census tract,
Wheelabrator Baltimore has a
population that is 66 % minority
& resides at 50 % below the
federal poverty rate

*the wind
doesn't segregate
or discriminate...*





**WHAT'S
COMPOSTING GOT TO
DO WITH
INCINERATION?**

The background of the slide is a grayscale photograph of an industrial facility. A tall, cylindrical incinerator chimney is the central focus, with thick white smoke rising from its top into a grey, overcast sky. To the left of the chimney, there are silhouettes of industrial structures and a tall light pole. The overall scene is industrial and somewhat somber.

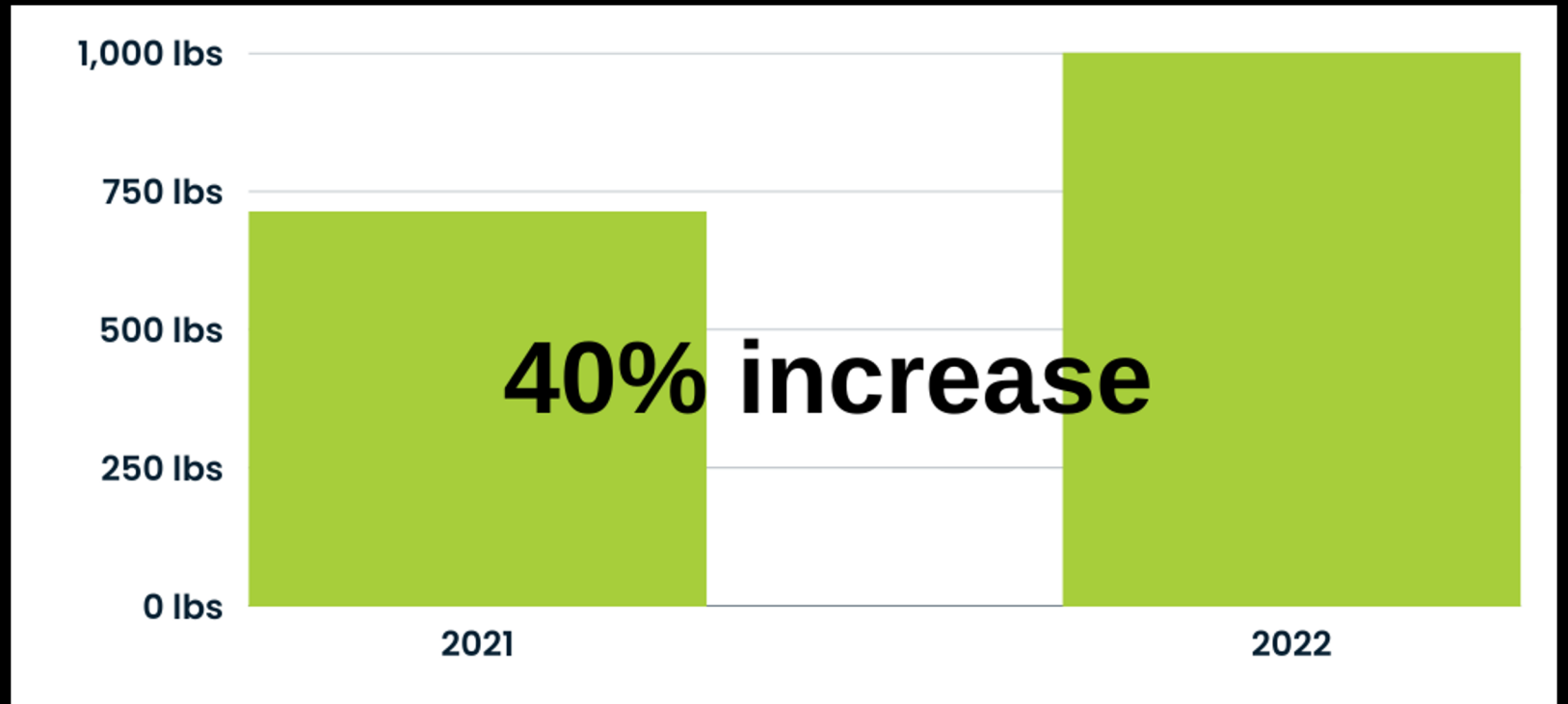


In 2022, an average of over **1,000** pounds per week collected an increase of **40%** over 2021.

49 pick-ups

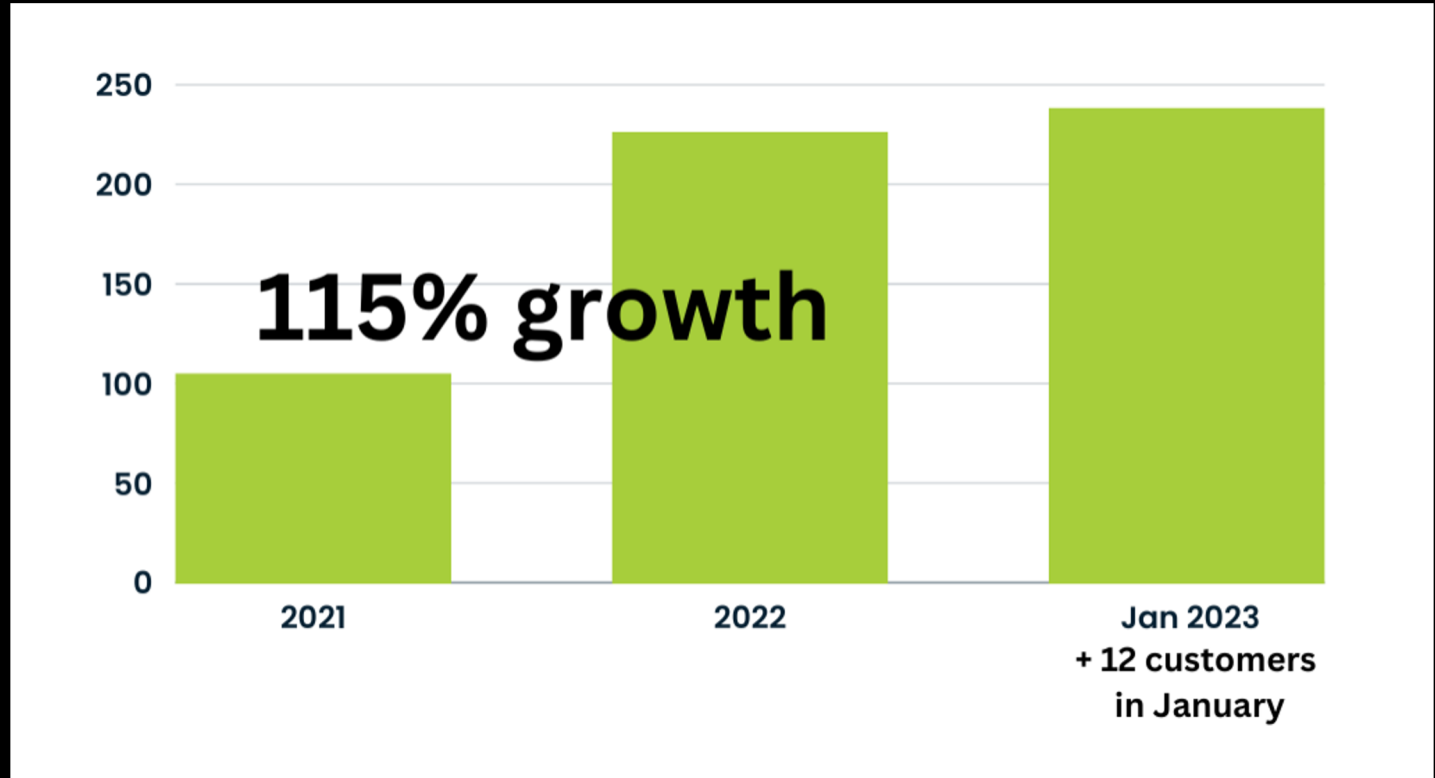


THOUSANDS OF POUNDS OF MUNICIPAL WASTE DIVERTED





At the end of 2022, the Collective had a **115% in increase** customer #s



SPREADING THE LOVE OF COMPOSTING WITH A PURPOSE





PRESENTED AT OVER 40 EVENTS

- reaching over **1500** people in person
- over 3,000+ viewings online
- including over **350** youth & school groups

**SPREADING COMPOST FEVER
THRU THE VARIANT OF EDUCATION**



SPREADING COMPOST FEVER THRU THE VARIANT OF EDUCATION

Panelist with NRDC @ South by Southwest
Austin, TX

Speaker @ ReFed Conference
Minneapolis, MN

Compost Facilitator & Educator
@ first all-Black-led composting training
(Black Excellence)
Detroit, MI

IN BALTIMORE & BEYOND ...



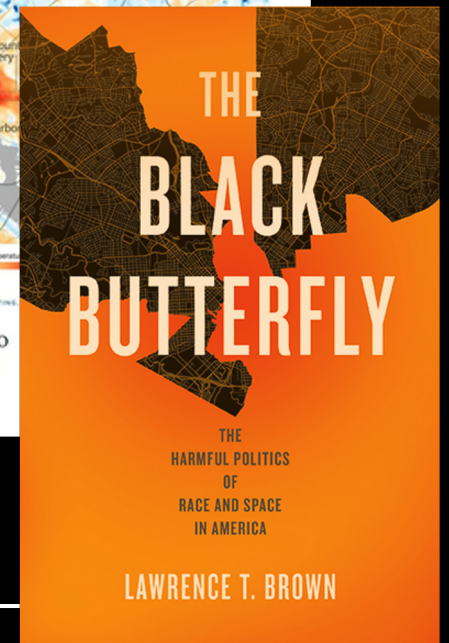
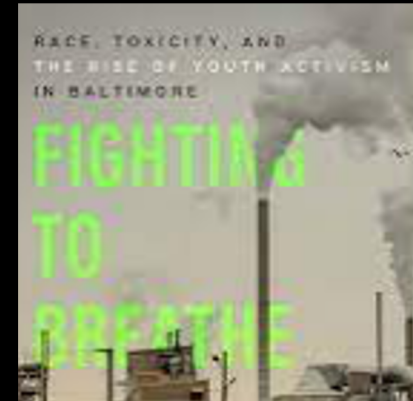
FEATURED

IN: *Fighting to Breathe: Race, Toxicity, and the Rise of Youth Activism in Baltimore*
by Nicole Fabricant; professor Towson University

The Black Butterfly: The Harmful Politics of Race and Space in America
By Lawrence T. Brown; professor

Podcast: My Block Counts Environmental Justice Podcast powered CEEJH WYPR

News Articles From:
Biocycle, The Guardian & The Baltimore Sun





We're not waiting for the city to bring us to the table, we are continuing to build our own inclusive composting table for Baltimore.

Zero Waste to Zero Emissions in Maryland

How compost can be our climate champion

Years in the making, the Global Alliance for Incinerator Alternatives's new report reveals how zero waste is an essential, cost-effective solution to climate change that helps build more just and resilient cities, and achieve the Paris Climate Agreement. The report's #1 recommendation for cost-effective climate action? Composting! What does this mean for us in Maryland?

Join us for a free webinar to talk about how composting - **NOT trash incineration** - is our climate champion, what MD has done to build the compost industry, what we have yet to do, and how you can get involved!

FEATURING:



ZERO
WASTE TO
ZERO
EMISSIONS

How reducing waste is a climate gamechanger

Wednesday 11/9, 5:30PM



MOVING BALTIMORE FORWARD - ReCYCLEMORE

IT'S ELECTRIC...

BUILDING THE FIRST ALL ELECTRIC FLEET



- In partnership with Yuba Bikes, the Collective purchased 2 electric bikes with front loading capabilities
- Bike-powered food scrap collection service will be piloted in February



IT'S ELECTRIC... BUILDING THE FIRST ALL ELECTRIC FLEET



- New electric van transforms the fleet & operations, providing increased capacity & a fuel savings of over 60%
- NO EMISSIONS

MERCHANDISE



T-shirts

S/M/L/XL

\$25

All proceeds benefit
the Collective



Kenny Video



CONTACT INFO

Marvin Hayes

baltimorecompostcollective@gmail.com



**HELP US STARVE THE
INCINERATOR**

**DONATE
NOW**

